



# SAILING INSTRUCTIONS(SI)

Swedish Championship in ILCA 6 Master open, ILCA Master Woman, ILCA 7 Master, and EurILCA Master Series , will be held the 29th to the 31st of August 2025 in Kullavik Sweden, by Kullaviks Kanot och Kappseglingssklubb, KKKK and authorized by the Swedish Sailing Federation, in association with ILCA Sweden. It is also part of the 2025 EurILCA Master Series (EMS) coordinated by EurILCA

## 1. RULES

- 1.1. The regatta will be governed by the “Rules” according to EMS 2025 Notice of Race and its appendix.
- 1.2. RRS Appendix T, Arbitration, will apply.
- 1.3. Appendix P will apply with the following changes:
  - 1.3.1 If a first penalty is signaled after a boat has crossed the finish line, the penalty will be a 10% Scoring Penalty calculated as stated in RRS 44.3(c). However, she shall not be scored worse than DSQ.
  - 1.3.2 RRS P4 is replaced with “An action by the jury under RRS P1.2 shall not be grounds for a request for redress by a boat under RRS 61.1(b). The jury may initiate a redress hearing and may give redress for an action under RRS P1.2 by a member of the jury or its designated observer”.
- 1.4. In all rules governing this regatta, (NP) denotes a rule that shall not be grounds for protests by a boat. This changes RRS 60.1.
- 1.5. Boats shall comply with the Class Rules as posted on the ILCA website. [DP]
- 1.6. ILCA class rule 7 (a) is restricted as follows “only one person shall be on board whilst racing. The person shall be named on the entry form” No substitution of helm is permitted.
- 1.7. Rule 40.1 shall apply at all times on the water.
- 1.8. Where there is a conflict between the Notice of Race and the Sailing Instructions, the Sailing Instructions shall prevail. This changes RRS 63.5 ( c ) 2.

## 2. NOTICES TO COMPETITORS

Notices to competitors will be posted on the online Official Notice Board (ONB) located on <https://www.sailarena.com/sv/se/club/kkkk/ilca-master-sm/>

- 2.1 (DP] While racing from the first warning signal until the end of the last race of the day, except in an emergency, a boat shall not make voice or data transmissions and shall not receive voice or data communication that is not available to all boats.

## 3. CHANGES TO SAILING INSTRUCTIONS

Any change to the Sailing Instructions will be posted at least one hour before the first warning signal of the day it will take effect, except for any change to the schedule of the races which will be posted by 19:00 hrs on the day before the change will take effect.

## 4. SIGNALS MADE ASHORE AND OTHER SIGNALS

- 4.1. Signals made ashore will be displayed on the Official flagpole located at the KKKK Club House.

4.2. **DP] [NP]** Flag D displayed with one sound means “The warning signal will be made not less than 60 minutes after flag D is displayed” No boat shall leave her berthing area until this signal is made.

4.3. When flag AP is displayed ashore ‘1 minute’ is replaced with ‘not less than 60 minutes’ in the race signal AP. This changes RRS Race signals.

4.4. When a signal ashore is displayed over a racing area flag and/or fleet flag(s) it shall apply to that racing area/fleet(s) only.

## 5. MEASUREMENT [DP]

Any boat or its equipment may be checked for compliance with the Class Rules and Sailing Instructions at any time throughout the Regatta at the discretion of the Race Committee, Technical Officer or Jury.

## 6. BOATS AND EQUIPMENT [DP]

In the event of damage, boats and equipment may only be substituted with the written permission of a Technical Officer. If the damage occurs later than 90 minutes before the first scheduled start on a racing day and before the start of the last race of the day, provisional verbal permission shall be obtained from a technical officer. The written permission of a technical officer shall be requested at the first reasonable opportunity.

## 7. RACING FORMAT

7.1. Up to 6 fleet races will be sailed.

7.2. A minimum of 3 completed races is required to constitute the regatta.

7.3. Three races are scheduled per day, back-to-back. The Race Committee may add one extra race per day if needed.

7.4. There will be separate rankings for each category (age class) according to the Notice of Race. Men and Women of the same category will race together.

## 8. SCHEDULE OF RACES

8.1. Programme:

DATE	TIME	DESCRIPTION
Friday, 29 <sup>th</sup> of August	15.00-20.00	Registration at Race office
Saturday, 30 <sup>th</sup> of August	08.00-09.00	Registration at Race office
	09.30	Skippers meeting
	11.00	First warning signal: First race of the 1 <sup>st</sup> day ILCA 7 and thereafter ILCA6
Sunday, 31 <sup>st</sup> of August	10.00	First warning signal: First race of the 2d day ILCA 7 and thereafter ILCA6

8.2 Any race whose warning signal has not been made by 15.00 on Sunday 31<sup>st</sup> will be abandoned and not re-sailed.

## 9. SCORING

9.1. Where races comprise more than one age category and/or men and women, the results for each age

category and/or Open and Women will be taken from the overall results without recalculation.

9.2. Individual age category results may be posted in addition to the combined race results from the race scores of combined groups (without recalculation).

9.3. When 4 or more races are completed, 1 race score will be excluded.

9.4. To request correction of an alleged error in the posted race or series results, a boat may complete a scoring enquiry form available at the race office.

## **10. CLASS FLAGS AND FLEET IDENTIFICATION**

10.1. The Class flags for the fleets will be:

- ILCA 7: Class insignia on white background
- ILCA 6: Class insignia green background
- 

10.2. **(NP, DP)** Women participant sails shall carry a red rhombus above the top batten pocket on both sides, according to the class rules.

## **11. COURSE AREA**

The course area is located West from Kullavik harbor, see Appendix 2.

## **12. THE COURSE**

12.1. Trapezoid courses will be used with inner and outer loops.

12.2. Appendix 1 shows the racecourse and the order in which marks are to be passed and the side on which each mark is to be left.

12.3. The length of the course will be set for a target time of 50 minutes. Failure to meet the target time will not be grounds for redress. This changes RRS rule 61.2(b)(1).

12.4 To change the next leg of the course, the race committee will move the original mark or the finishing line. If the direction of the leg is changed, the signal shall be the display of flag C with repetitive sounds. The new compass bearing will not be displayed and any change to starboard / port will not be indicated (by green / red triangles). This changes to RRS 33(a). If the length of a leg is changed, this will not be signaled (with + / - signs). This changes RRS 33(b)."

## **13. MARKS**

A list of the marks that will be used, including a description of each one, are included in appendix 1.

## **14. THE START**

14.1. The starting line will be between a member of staff displaying an orange flag on the Race Committee Boat and the course side of a buoy with an orange flag on the pin-end.

14.2. The warning signal for the next fleet will be given as soon as practicable after the previous start.

14.3. When a race has finished, the warning signals for a subsequent start procedure on the same day will be given as soon as practicable.

14.4. To alert boats that a race or sequence of races will begin soon, the orange starting line flag will be displayed with one sound at least five minutes before a warning signal is made.

14.5. **(NP, DP)** Boats whose warning signal has not been displayed shall keep clear of the starting line between the warning and, the earliest of 4 minutes after the starting signal of the preceding fleet or when all boats of the preceding fleet have started.

14.6. A boat that does not start within 4 minutes after her starting signal will be scored DNS without hearing. This changes RRS A4 and A5.

## 15. ABANDONING RACE

The Race Committee may abandon a race because of a storm, apparent or forecast, a major wind shifts or irregular winds or when the wind speed drops (This changes RRS 32.1).

## 16. THE FINISH

The finishing line will be between a staff displaying a blue flag on a Race Committee Boat and the course side of a buoy with a blue flag on the pin-end.

## 17. TIME LIMIT

17.1. Boats failing to finish within 15 minutes (finish window) after the first boat sails the course and finishes will be scored DNF without hearing. This changes RRS 35 Appendix A.4 and Appendix A.5.

17.2. Time limits for the first boat are as follows:

**Mark 1 time limit:** 25 minutes

**Race Time limit:** 70 minutes

If no boat has passed Mark 1 within the Mark 1 time limit the race will be abandoned. Noncompliance of the target time shall not be grounds for redress. This changes RRS 62.1 (a)

## 18. PROTESTS

18.1. Protests forms are available at the Race Office. Protest and requests for redress or reopening shall be delivered within the appropriate time limit. The *Protest Time Limit*, which is one (1) hour after the last boat in a fleet has finished the last race of the day or the race committee signals no more racing today, whichever is later.

18.2. The protest time limit will be posted on the online ONB and may be different for each class.

18.3. The schedule of hearings will be posted not later than 20 minutes after the protest time limit. Protests will be heard in the Jury room at the Kullaviks Kanot and Kappseglingssklubb(KKKK)

18.4. Protests by the Race Committee, Jury or Technical officer will be posted on the ONB to inform boats under RRS rule 60.2(a)(2).

18.5. On the last scheduled day of racing a request for redress based on a Protest Committee decision shall be delivered no later than 30 minutes after the decision was posted. This changes RRS 61.2.b.(2).

18.6. A list of boats that, under SI 1.2, have been penalized for breaking RRS 42 will be posted.

18.7. The Swedish Sailing Federation has approved that the decisions of the Jury are final as provided in RRS 70.3.

## 19. PRIZES

Swedish Championship medals will be awarded for the top [3] of each fleet ILCA6 open and ILCA7, and for ILCA 6 Woman, should the competition have more or equal to six women sailors with Swedish citizenship. (SSF recommendation)

Prizes will be awarded in the following categories, to the top [3] of each fleet

ILCA 7 Fleet: Apprentice, Master, Grand Master and Great Grand Master Open  
ILCA 6 Fleet: Apprentice, Master, Grand Master, Great Grand Master, Legend Open and Women.

## **20. SAFETY (DP, NP)**

- 20.1. Except in emergencies, boats shall only come ashore at Kullavik Harbor
- 20.2. A boat that retires from a race shall notify the Race Committee or the Race Office as soon as possible.
- 20.3. During registration each competitor will receive an identification number which shall be fixed to their respective boat trolleys (dolly) handle, in such a way that the number is easily seen.
- 20.4. All competitors must use the safety system with ID wrist band provided by KKKK, for check in and out.
- 20.5. The Race Committee and the Race Office will use VHF channel 72 for their communications. Safety Boats VHF channel 77 or cellphone
- 20.6. All boats ashore shall only be located at the boat's parking area. In case of a participant decides to leave, shall inform immediately to the Race Office.
- 20.7. Infringement of the SI implies rule RRS 2 infringement and its consequences.

## **21.DISCLAIMER**

All those taking part in the event do so at their own risk and responsibility.

The Organizing Committee, EurILCA or any party involved with the organization of the event disclaim any and every responsibility whatsoever for loss, damage, injury or inconvenience that might occur to persons and goods, both ashore and at sea as a consequence of participation in the races covered by the Notice of Race and the Sailing Instructions.

Attention is drawn to the RRS Fundamental Rule 3 – Decision to Race, which states:

“The responsibility for a boat's decision to participate in a race or to continue racing is hers alone”.

## **22. IDENTIFICATION OF RACE MANAGEMENT VESSELS**

- 22.1. Race Committee boats will display an KKKK identification flag.
- 22.2. Jury boats will display a white flag with “J/Jury” written in blue or black.
- 22.3. Safety boats will display a yellow flag with “S/Safety”

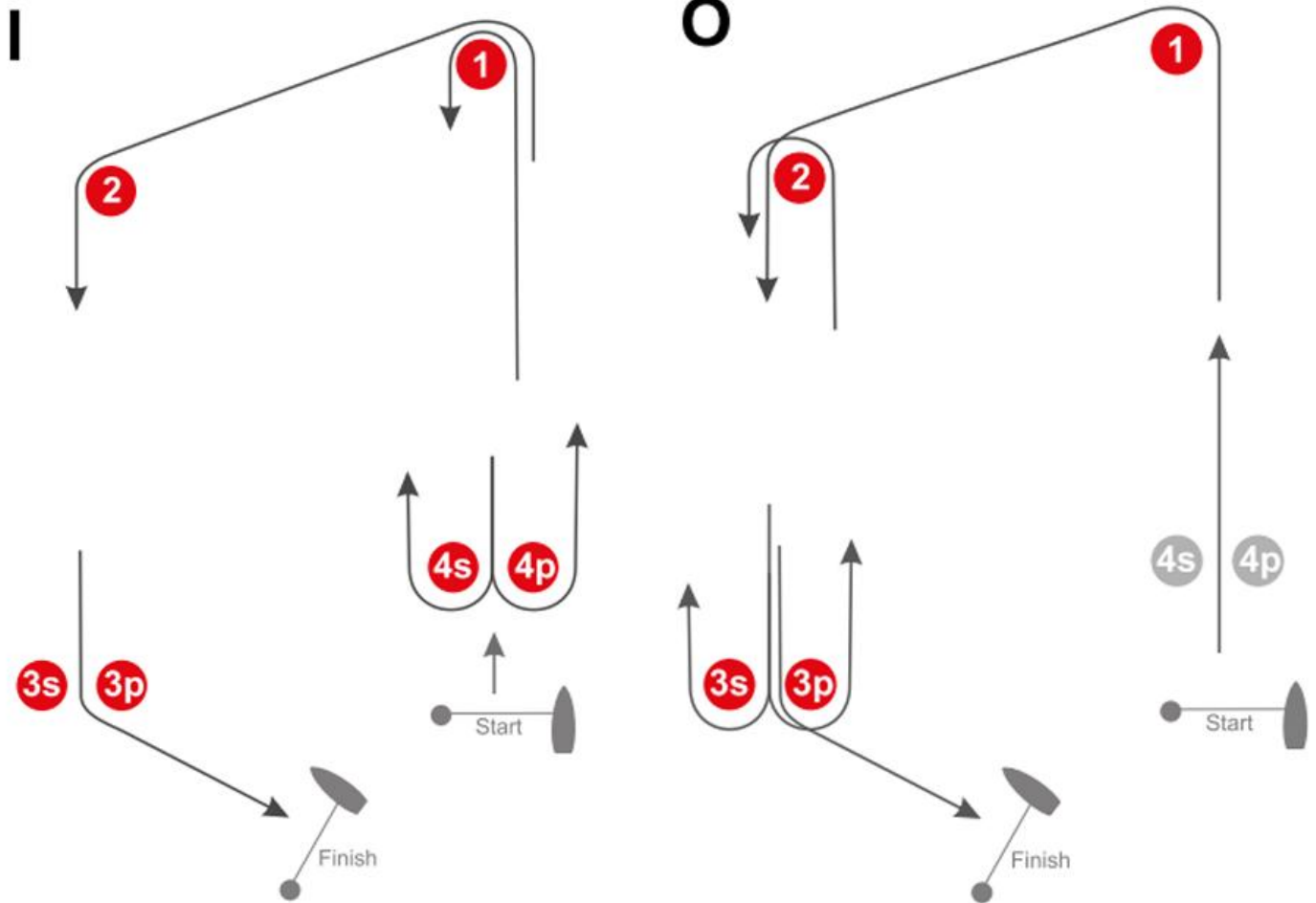
Appendix      1 Courses and Marks  
                    2 Race Areas  
                    3 Orientation map

# APPENDIX 1: Courses and Marks

## COURSE ILLUSTRATIONS

ILCA 7: Sails Course O = Outer loop

ILCA 6: Sails Course I = Inner Signal Course: Inner loop Trapezoid



**COURSE "O":** Start, 1 (port), 2 (port), 3s/3p (gate\*), 2 (port), 3p (port) and finish

**COURSE "I":** Start, 1 (port), 4s/4p (gate\*), 1 (port), 2 (port), 3p (port) and finish (\*):

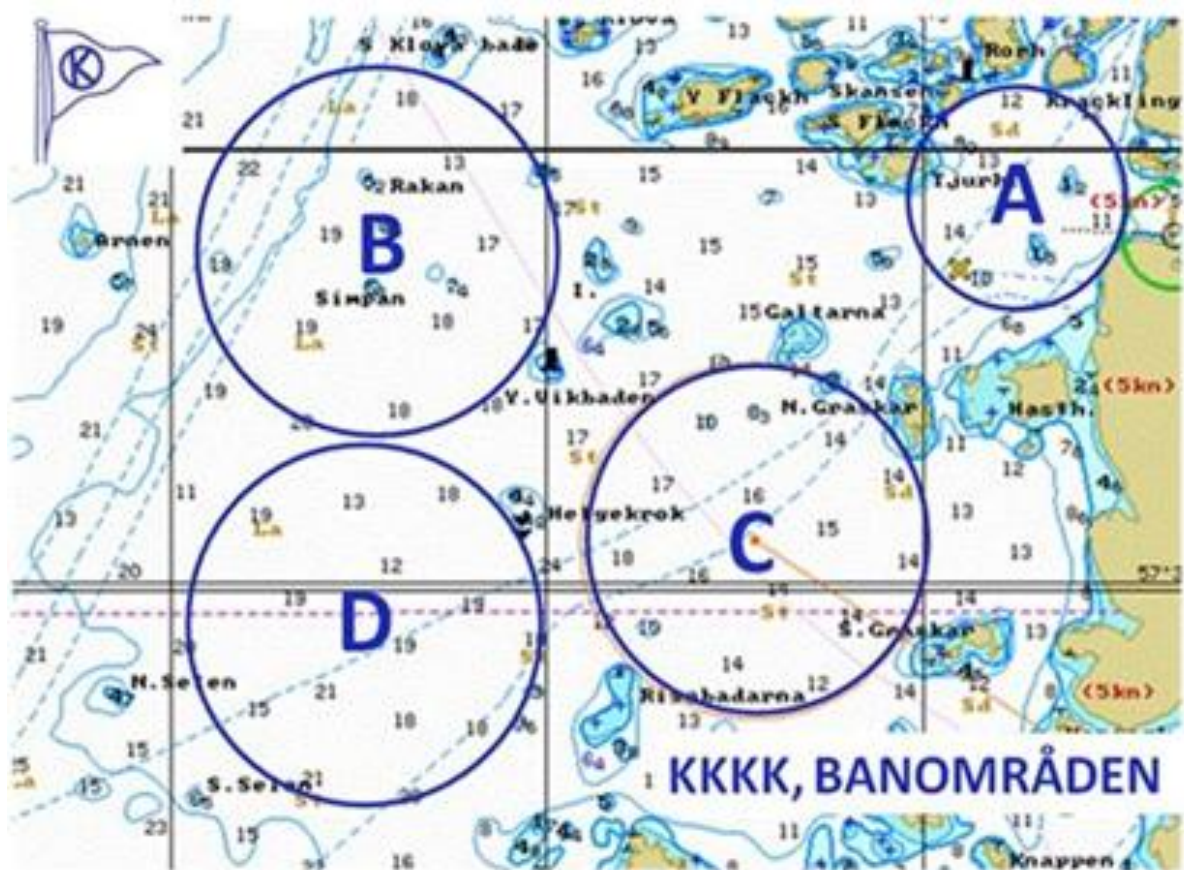
If one of the gate marks is missing, the remaining mark shall be rounded to port.

### MARK DESCRIPTIONS:

Course Marks: Yellow cylinder buoy, mark 1,2,3S and 3P

Gate course Marks: White/red buoy, mark 4S and 4P

## APPENDIX 2: Race areas





## APPENDIX 3: Orientation Map

