

# Notice of Race

## Swedish Championship for Laser

<b>Swedish championship</b>	Laser standard Laser Radial (Ladies)
<b>Swedish Class Championship</b>	Laser Radial (Male) Laser 4.7 (Open)
<b>Date:</b>	August 31 – September 1st 2019
<b>Organizer:</b>	Jollekappseglarna Västerås

---

*This English version of NoR is to be considered as a service to any non-Swedish participants. In case of any differences, the Swedish version is the original*

### 1. Rules

- 1.1 The regatta will be governed by the rules as defined in the Racing Rules of Sailing (RRS) and with appendix S. Laser Class rules applies  
The sailing instructions will consist of the instructions in RRS Appendix S, Standard Sailing Instructions, and supplementary sailing instructions that will be on the digital official notice board to be found via [www.jkv.se](http://www.jkv.se) (paper copies will be on a board outside the clubhouse)
- 1.2 Boats may be required to display advertising chosen and supplied by the organizing authority. If this rule is broken, World Sailing Regulation 20.9.2 applies. [DP]
- 1.3 Competitors shall when afloat wear personal flotation devices. This rule does not apply to short-term replacement or adjustment of clothing or personal equipment. Wet suits and dry suits are not personal flotation devices. This changes RRS 40. A boat that breaks this rule may be warned or penalized at the discretion of the protest committee (DP)
- 1.4 The competitor that is in charge on board shall follow Swedish Sailing Federations racing license regulation for competitors. This regulation applies from the year the competitor reach the age of 12. Competitors from other countries than Sweden are exempt from this regulation

### 2. Eligibility requirements

- 2.1 To be entitled to participate in Riksidrottsförbundets championships, each competitor must comply with World Sailing Regulation 19.  
In order to be awarded the title Swedish Champion (SM) the competitor shall be Swedish citizen or have resided in Sweden for at least six months the last twelve months before the regatta starts
- 2.2. Each participating boat must have a valid third party liability insurance
- 2.3 Competitors must be members in respective national class association
- 2.4 Competitors participate in the regatta entirely at their own risk. See RRS 4, Decision to Race. The organising authority will not accept any liability for material damage or personal injury or death sustained in conjunction with or prior to, during, or after the regatta

- 2.5 When the water temperature is below +14°C clothing given a good protection against cooling in water shall be worn – wet suit, dry suit or similar
- 2.6 Text and pictures from the competition will be published on the internet. By registering for the regatta, the participant agrees to this

### **3. Entries**

- 3.1 Entry shall be made not later than Friday August 23rd via <https://anmalning.jkv.se>. Late entries are allowed at a higher cost until Saturday August 31<sup>st</sup> at 09.00
- 3.2 The advance entry shall include the following:
- Sailor-Id
  - Nationality
  - Sail number
  - Competitors name
  - Gender
  - Date of birth
  - Class
  - Club
  - Phone
  - E-mail
- 3.3 The entry fee is 600 SEK and shall be paid via Swish 123 056 30 49 or bankgiro 379-0235.  
Payment should be at club bank account no later than August 23.  
Entry fee after August 23<sup>rd</sup> is 800 SEK and should be paid on site via Swish  
A national class association fee of 50 SEK is included in the entry fee

### **4. Registration and measurement checks**

- 4.1 Registrations shall be made at the race office not later than Saturday August 31<sup>st</sup> at 09.30
- 4.2 Competitor that is in charge onboard, according to §1.4 shall be able to present a valid license for competitor
- 4.3 A boat or equipment may be inspected at any time for compliance with the class rules and sailing instructions. On the water, the race- or/and the technical committee can instruct a boat to proceed immediately to a prescribed location for inspection
- 4.4 Substitution of damaged or lost equipment will not be allowed unless approved by the race committee. Requests for substitution shall be made to the Race committee at the first reasonable opportunity

### **5. Time schedule**

- 5.1 Program

**Friday August 30th**

17:00-ca 20:00 Registration

**Saturday August 31st**

08:00-09.30 Registration

09:00 Coachmeeting

09:45 Skippers briefing

10:55 Earliest time for first Warning signal  
Aftersail outside the clubhouse

### **Sunday September 1st**

10:25 Earliest time for first warning signal  
No new start attempts will be made after 14.55  
Prize giving ceremony will be made as soon as possible after last race and time for protest committee

5.2 Six (6) races are planned, max four races per day

## **6. Race format**

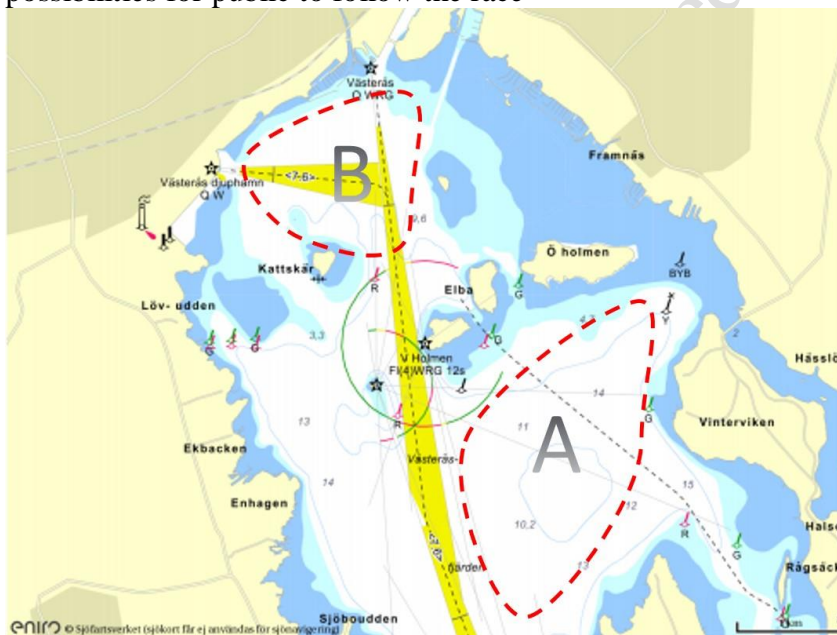
6.1 All races during a day are planned to be performed in a row with only a short break between the races on the water.

## **7. Racing area**

7.1 We have two available racing areas.

A: Racing area northwest of the island “Björnön”, less than 1,5 NM from the clubhouse at Framnäs

B: Racing area close to the city where we sail close to the shore with good possibilities for public to follow the race



## **8. The course**

8.1 The course will be detailed in the complementary Sailing Instructions. The racing committee will optimize the race course to get a race time at 60 minutes

## **9. Protests and penalty systems**

9.1 RRS Appendix T1 will apply

9.2 RRS Appendix P will apply with the following changes:  
RRS P2.3 is deleted and RRS P2.2 “penalized a second time” is changed to “penalized a second or subsequent time”

## **10. Scoring**

- 10.1 The low point scoring system of RRS Appendix A will apply, modified so that when three or fewer races have been completed, a boat's series score will be the total of her race scores
- 10.2 3 races are required to be completed to constitute a championship

## **11. Prizes**

- 11.1 Prizes to every 5th competitor with valid entry counted Saturday August 24th
- 11.2 Championship plaque and titles may be awarded if six or more boats from at least three different Swedish clubs located in more than one Swedish districts have crossed the finish line in one race in the championship.

## **12. Rules for support persons**

- a) Support persons shall follow Swedish Sailing Federation safety code.
- b) Support person shall launch, berth and take up his craft (coach boat) as directed by the organizer.
- c) Support person shall follow RRS 1, 2 and 55 and not subject a competitor to risk breaking RRS 41.
- d) During the race, a support person shall not be closer to a competitor than 50 meters, except when the support person acting under RRS 1.1.

**Date:** June 2019

**Name:** Patrik Björklund  
Race Committee Officer  
+46 73 7656275