

SAILING INSTRUCTIONS (SIs)

The EurILCA Master Series and the Swedish Championship ILCA 6 Master respective ILCA 7 Master, will be held from the 16th to the 18th of 2024 in Oxelösund Sweden, by the Oxelösund segelsällskap, OXSS and authorized by the Swedish Sailing Federation, in association with ILCA Sweden.

It is also part of the **2024 EurILCA Master Series (EMS)** coordinated by EurILCA.

1. RULES

- 1.1. The regatta will be governed by the “Rules” according to EMS 2024 Notice of Race and its Appendix.
- 1.2. The regatta will be governed by the “Rules” as defined in the World Racing Rules of Sailing (RRS).
- 1.3. The prescriptions of the National Authority will not apply, except the prescriptions in NoR 4.5, 4.6 and SIs 18.2.
- 1.4. No “Risk Responsibility Consent Declaration” shall be signed. This changes NoR 4.7(e) and 18.4.
- 1.5. ILCA class rule 7 (a) is restricted as follows: “Only one person shall be on board whilst racing. The person shall be named on the entry form.”
- 1.6. Crew substitution of the registered sailor is not permitted.
- 1.7. Appendix P will apply with the following changes:
 - 1) If a first penalty is signalled after a boat has crossed the finish line, the penalty will be a 10% Scoring Penalty calculated as stated in RRS 44.3(c). *However, she shall not be scored worse than DSQ.*
 - 2) RRS P3 is replaced with “If a boat has been penalised for the first time under RRS P1.2 and the race is restarted or resailed the penalty is cancelled, but it is counted to determine the number of times she has been penalised during the event.
 - 3) RRS P4 is replaced with “An action by the jury under RRS P1.2 shall not be grounds for a request for redress by a boat under RRS 60.1(b). The jury may initiate a redress hearing and may give redress for an action under RRS P1.2 by a member of the jury or its designated observer”.
- 1.8. In all rules governing this regatta, [NP] denotes a rule that shall not be grounds for protests by a boat. This changes RRS 60.1(a).
- 1.9. The notation [DP] in a rule has the meaning prescribed at the paragraph Notation of the RRS Introduction.
- 1.10. **[NP][DP]** Competitors and support persons shall comply with reasonable requests from race officials or the personnel of the Organizing Authority.
- 1.11. If there is a conflict between languages, the English text will take precedence.

2. NOTICES TO COMPETITORS AND IMPORANT LOCATIONS

- 2.1. Notices to competitors will be posted on the official notice board named “ANSLAGSTAVLA” at <https://www.sailarena.com/sv/se/club/oxss/ilca-sm-master/>
- 2.2. NoR, SIs and other documents are displayed under “Document” at SailArena: <https://www.sailarena.com/sv/se/club/oxss/ilca-sm-master/>
- 2.3. The Race Office is located in the OXSS clubhouse,
Phone: +46(0)155 430330 E-mail: ilca@oxss.se
- 2.4. Addendum A; Harbour map and locations.

3. CHANGES TO THE SAILING INSTRUCTIONS

- 3.1. Any change to the sailing instructions will be posted at least 2h. before the first warning signal of the day it will take effect, except that any change to the schedule of races will be posted by 20:00h. on the day before it will take effect.
<https://www.sailarena.com/sv/se/club/oxss/ilca-sm-master/> [see ANSLAGSTAVLA]

4. SIGNALS MADE ASHORE AND OTHER SIGNALS

- 4.1. Signals made ashore will be displayed on the Official Signal Mast (OSM) located in front of the OXSS clubhouse.
- 4.2. Flag **AP**, with two sound signals displayed ashore means: “The race is postponed. The first warning signal will be made not less than 60 minutes after AP flag is lowered with one sound signal.” This changes RRS race signals AP.
- 4.3. When a signal is displayed over a starting group, category or class flag, this signal will affect only that starting group, category or class (see RRS race signals).

5. MEASUREMENT [DP]

Any boat or her equipment may be checked for compliance with the Class Rules and Sailing Instructions at any time throughout the Regatta at the discretion of the Race Committee, Technical Committee or Jury. On the water, a boat may be required by a technical inspector to proceed immediately to a place determined by the technical committee for measurement checks.

6. BOATS AND EQUIPMENT

- 6.1. All competitors shall use only one hull, sail, mast, boom, centreboard and rudder. The EurILCA Master Series will be sailed in ILCA class boats as recognized by World Sailing and which comply with the ILCA Class Rules. All boats must have a valid World Sailing Plaque attached in accordance with the ILCA class rules to the aft face of the cockpit.
- 6.2. **[DP]** In the event of damage, boats and equipment may only be substituted with the written permission of the Technical Committee. If the damage occurs later than 90 minutes before the first scheduled start on a racing day and before the start of the last race of the day, provisional verbal permission shall be obtained from the Technical

Committee, Jury or Race Committee. The written permission of the Technical Committee shall be requested at the first reasonable opportunity.

- 6.3. Sails shall have the full sail number and national letters in accordance with the class rules and RRS. The national letters shall denote the National Authority of which the sailor is a member in accordance with RRS 75 and NoR 4.4. This changes RRS G1.1.

7. RACING FORMAT

- 7.1. 6 races are planned.
 7.2. A minimum of one completed race is required to constitute the EMS-regatta.
 7.3. A minimum of 3 races is required to constitute ILCA Master SM status.
 7.4. Three races are scheduled per day, back to back. The race committee may add one extra race per day if the total number of races are behind the schedule or may risk coming behind on day two of the competition due to the weather.
 7.5. There will be a separate start for the ILCA 7 and ILCA 6, see SIs 8.
 7.6. Men and Women of the same fleet will race together.

8. SCHEDULE OF RACES

- 8.1. Skippers meeting will be held **Saturday 17th August at 09:00h**.
 8.2. The scheduled time of the warning signal of the races on each day is:

Date	Races	Fleet	Time
17 th August	First race of the day	ILCA 7	First warning signal: 11:00h.
		ILCA 6	As soon as possible after a valid start of the ILCA 7
	Next races	ILCA 7	As soon as possible after the finish of previous race
		ILCA 6	As soon as possible after a valid start of the ILCA 7
18 th August	First race of the day	ILCA 7	First warning signal: 10:00h.
		ILCA 6	As soon as possible after a valid start of the ILCA 7
	Next races	ILCA 7	As soon as possible after the finish of previous race
		ILCA 6	As soon as possible after a valid start of the ILCA 7

- 8.3. To alert boats that a race or sequence of races will begin soon, the orange starting line flag will be displayed with one sound signal at least five minutes before a warning signal is made.
 8.4. On the last day of the regatta no warning signal will be made after 15:00h. Any race whose warning signal has not been made by 15:00h. on Sunday 18th will be abandoned and not re-sailed.

9. SCORING

- 9.1. Where a fleet has been split into groups based on age category and more than one age category race together, the race results for the age categories will be extracted from the overall results without recalculation. Individual age category results may be posted in addition to the combined race results from the race scores of combined groups (without recalculation).

- 9.2. Where a fleet has been split into groups NOT based on age category the race results for the age categories will be extracted from the overall results without recalculation. Individual age category results may be posted in addition to the combined race results from the race scores of combined groups (without recalculation).
- 9.3. When 4 or more races are completed, one race score will be excluded.
- 9.4. To request correction of an alleged error in posted race or series results, a boat may complete a scoring enquiry form available at the race office or online (where available).
- 9.5. Where a class race all age categories together without splitting the results for the age categories will be extracted from the overall result without recalculation.

10. CLASS FLAGS AND FLEET IDENTIFICATION

- 10.1. Class flags will be as follows:

Classes/Fleets	Class insignia	Background colour
ILCA 7	Red ILCA logo	White
ILCA 6	Red ILCA logo	Green

- 10.2. **[NP][DP]** Each boat in the following categories shall display a coloured band at the base of the mast of 30 cm long, between the vang fitting and the boom, corresponding to the colour of the age category in which the competitor is sailing, as follows (each competitor should re-use the coloured race sleeve from a previous event or bring his own coloured sleeve):
- Apprentice: Green
 - Master: Red
 - Grand Master: Blue
 - Great Grand Master: Yellow
 - Legend : White
- 10.3. **[NP][DP]** Women participant sails shall carry a red rhombus above the top batten pocket on both sides, according to the class rules.

11. RACE AREA

- 11.1. Addendum B “Race Area” show the location and letter of racing areas.
- 11.2. Racing area to be used will be announced according to SI 2.1.

12. COURSES AND MARKS

- 12.1. Trapezoid courses will be used with inner and outer loops. Addendum C show courses and marks, the order in which marks are to be passed, and the side on which each mark is to be left.
- 12.2. Fleet ILCA 6 sails course Inner (**I**) and fleet ILCA 7 sails course Outer (**O**).
- 12.3. When an extra “loop”, course **I3** and/or **O3** is to be sailed, this will be signalled with flag signal “**3**” together with the class flag.

13. THE START

- 13.1. Races will be started using RRS 26.
- 13.2. The starting line will be between a buoy with staff displaying an orange flag at the port end and a staff with an orange flag on the starting vessel at the starboard side.
- 13.3. To alert boats that a race or sequence of race will begin soon, the orange starting line flag will be displayed with one sound at least 5 minutes before a warning signal is made.
- 13.4. The warning signal for the next fleet will be given as soon as practicable after the previous start.
- 13.5. When a race has been completed, the warning signal for a subsequent start procedure on the same day will be given as soon as practicable.
- 13.6. **[NP][DP]** Boats whose warning signal has not been made shall keep well clear of the starting area between the warning signal and one minute after the starting signals of the preceding fleet start.
- 13.7. A boat that does not start within 4 minutes after her starting signal will be scored Did Not Start (DNS) without a hearing. This changes RRS A4 and A5.
- 13.8. **[NP][DP]** Boats not racing shall keep well clear of starting area as well as racing area and not interfere with Racing Committee vessels.

14. CHANGE OF THE NEXT LEG OF THE COURSE

To change the next leg of the course, the race committee will move the original mark (or the finishing line) to a new position.

15. THE FINISH

The finishing line will be between a buoy with a staff displaying a blue flag and a staff with a blue flag on the race committee finishing vessel.

16. TIME LIMITS AND TARGET TIMES

- 16.1. Time limits and target times in minutes will be as follows:

Target Time	Time Limit	Finishing Window
45	90	20

- 16.2. Boats failing to finish within the time stated under 'Finishing Window' after the first boat of the class or fleet sails the course and finishes will be scored Did Not Finish (DNF) without a hearing. This changes RRS 35, A.4 and A.5.
- 16.3. Failure to meet the target time will not be grounds for redress. This changes RRS 62.1(a).

17. PROTESTS

- 17.1. Protest forms are available at the Race Office. The protest time limit is 30 minutes after the boats have given reasonable time to get ashore, after the last boat has finished the last race of the day or the race committee signals no more racing today,

- whichever is latest. The total protest time limit will be posted on the online ONB / ANSLAGSTAVLA and may be different for each class/fleet.
- 17.2. The schedule of hearings will be posted not later than 30 minutes after the protest time limit. Protests will be heard in the Jury Hearing Room located in the wagon in front of the garage at OXSS clubhouse.
 - 17.3. Protests by the Race Committee, Jury or Technical Committee will be posted on the online ONB / ANSLAGSTAVLA to inform boats under RRS rule 61.1(b).
 - 17.4. On the last schedule day of racing a request for redress based on a Protest Committee decision shall be delivered no later than 30 minutes after the decision was posted. This changes RRS 62.2.
 - 17.5. A list of boats that, under SI 1.2, have been penalized for breaking RRS 42 will be posted on the online ONB / ANSLAGSTAVLA.

18. PRIZES

- 18.1. **EurILCA Master regatta** prizes will be awarded in the following categories, to the top one of each fleet:
ILCA 7 fleet: Apprentice Master, Master, Grand Master and Great Grand Master.
ILCA 6 fleet, open and woman: Apprentice Master Open, Master Open, Grand Master Open, Great Grand Master Open, Legend Open and Apprentice Master Woman, Master Woman, Grand Master Woman and Great Grand Master Woman.
- 18.2. **Prizes in the Swedish Championship** will be awarded in the **ILCA 6 Master** respective **ILCA 7 Master** to the top three in each class. The Swedish Sports Confederation's Championship rules and SSF's Competition Regulations 2024 Chapter 8 will apply for the award of championship titles and championship signs. These regulations state, among other things, that a competitor to obtain the title of Swedish Champion must be a Swedish citizen. The winner in each class will also be awarded with a place in the Swedish sailing competition "Seglingens Mästare" at Marstrand 12th-13th October 2024.

19. SAFETY REGULATIONS [DP][NP]

- 19.1. Except in emergency, boats shall only go ashore at OXSS dingy ramps.
- 19.2. Competitors who require assistance should wave one arm with hand open. If no assistance is required, the arm should be waved with fist closed.
- 19.3. If considered necessary a competitor may be ordered by a race organization vessel to abandon his or her boat and board a patrol vessel.
- 19.4. A boat that retires from a race shall notify a race committee vessel, safety/patrol or jury boat as soon as possible and the race office immediately after returning to the shore.
- 19.5. The Race Committee, the Regatta Coordination Centre, the Race Office and the Safety Boats will use VHF channel 72 for their communications.
- 19.6. All boats while not racing shall only be located at the boat's parking area. In case of a participant decides to leave, the sailor shall inform immediately the Race Office.

- 19.7. To and from the racing area there are shallows to avoid, these can be scrutinized extra carefully at: <https://skippo.se/plan> - make sure to zoom in Oxelösund and the racing areas shown in Addendum B.
- 19.8. **[NP]** The waterway for ships to/from Oxelösund harbour shall not be entered by boats while racing. Boats sailing to and from the racing area shall keep well clear of the commercial ships, pilot boats, tugboats etc going to and from the Oxelösund harbour.

20. DISCLAIMER

All those taking part in the event do so at their own risk and responsibility. The Organizing Committee, EurILCA or any part involved with the organization of the event disclaim any and every responsibility whatsoever for loss, damage, injury or inconvenience that might occur to persons and goods, both ashore and at sea as a consequence of participation in the races covered by the Notice of Race and the Sailing Instructions.

Attention is drawn to the RRS Fundamental Rule 4 – Decision to Race, which states: “The responsibility for a boat’s decision to participate in a race or to continue racing is hers alone”.

21. IDENTIFICATION OF RACE MANAGEMENT VESSELS

- 21.1. Jury vessels will display a “J”-flag [blue/white].
- 21.2. Safety boat will display a “R”-flag [red/yellow].

DATE: 2024-08-15

SIs ADDENDUM A - page 1(1)

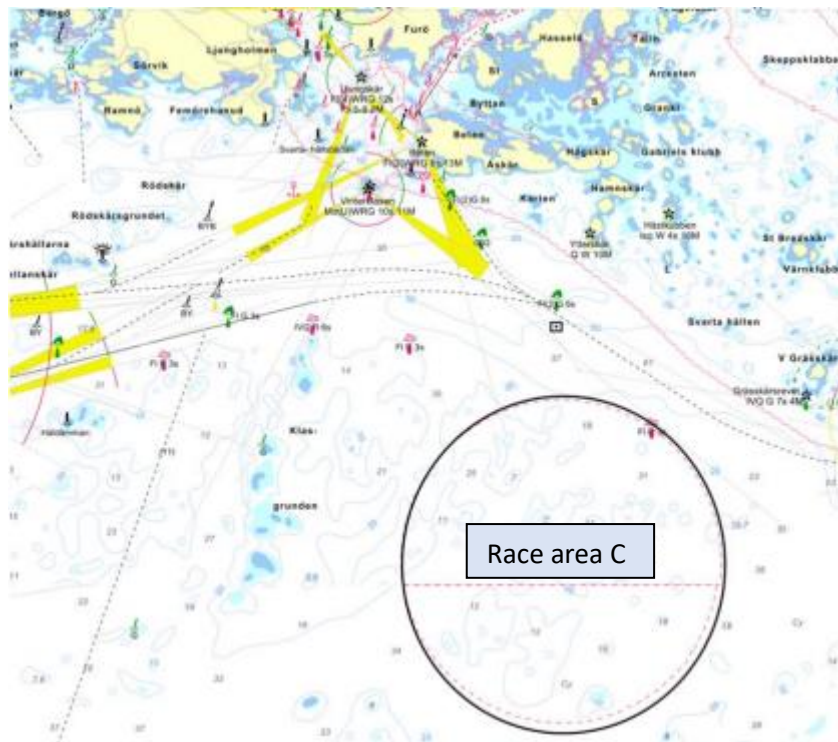
HARBOUR MAP AND LOCATIONS



SIs ADDENDUM B - page 1(1)

Race Area

Race area A will be prioritized. If vessels are anchored in that area, race area B will be used.
Race area C is available if need be.

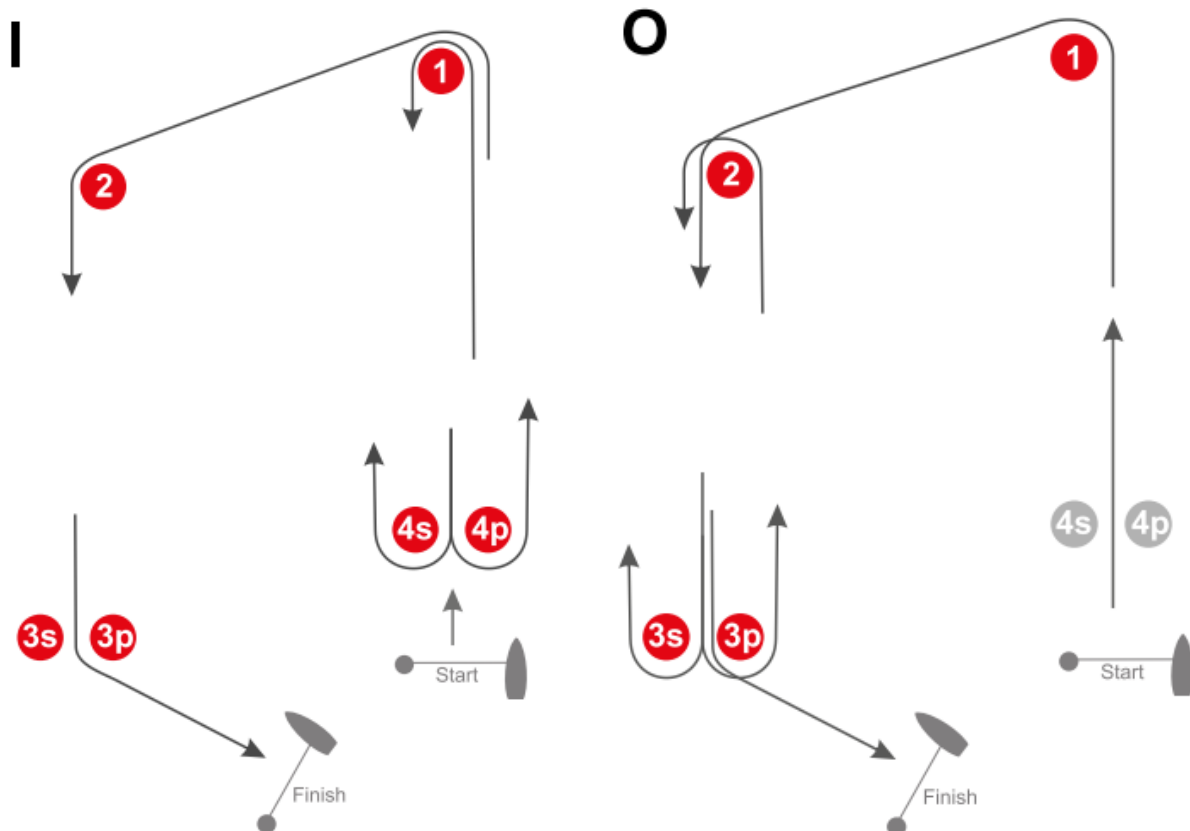


SIs ADDENDUM C - page 1(1)

COURSE ILLUSTRATIONS

ILCA 6: Sails Course I = Inner

ILCA 7: Sails Course O = Outer



Signal	Course: Inner Trapezoid	Signal	Course: Outer Trapezoid
I 2	Start - 1 - 4s/4p* - 1 - 2 - 3p - Finish	O 2	Start - 1 - 2 - 3s/3p* - 2 - 3p - Finish
I 3	Start - 1 - 4s/4p* - 1 - 4s/4p* - 1 - 2 - 3p - Finish	O 3	Start - 1 - 2 - 3s/3p* - 2 - 3s/3p* - 2 - 3p - Finish

(*): If one of the gate marks is missing, the remaining mark shall be rounded to port.

MARKS FEATURES:

Course Marks: Yellow cylinders

Starting Mark: Race committee vessel and Buoy with staff displaying orange flag.

Finishing Mark: Race Committee vessel and Buoy with staff displaying a blue flag.